



## ASTROYAARI APPLICATION

**Student: Bijaylaxmi Mahapatra**

Email ID: [bijaylaxmi2023@gift.edu.in](mailto:bijaylaxmi2023@gift.edu.in)

**Mr. Jagannath Ray Assistant Professor, Department of MCA, GIFT Autonomous, Bhubaneswar, BPUT, India**

Email ID: [jagannath.ray@gift.edu.in](mailto:jagannath.ray@gift.edu.in)

profile system to manage personal data and astrological history efficiently.

**Abstract-** Astroyaari is a comprehensive astrology-based mobile application designed to connect users with professional astrologers and personalized astrological insights. The app serves as a digital platform where individuals can seek guidance on various life aspects such as career, relationships, health, and finances through expert advice rooted in Vedic astrology and other trusted astrological practices.

In today's fast-paced world, many people turn to astrology to find clarity and confidence in their decisions. AstroYaari addresses this need by offering a user-friendly interface, real-time chat capabilities, and secure communication features. Users can generate birth charts (Kundli), access daily horoscopes, ask personalized questions, and consult with astrologers via chat or call, all within a seamless and intuitive app environment.

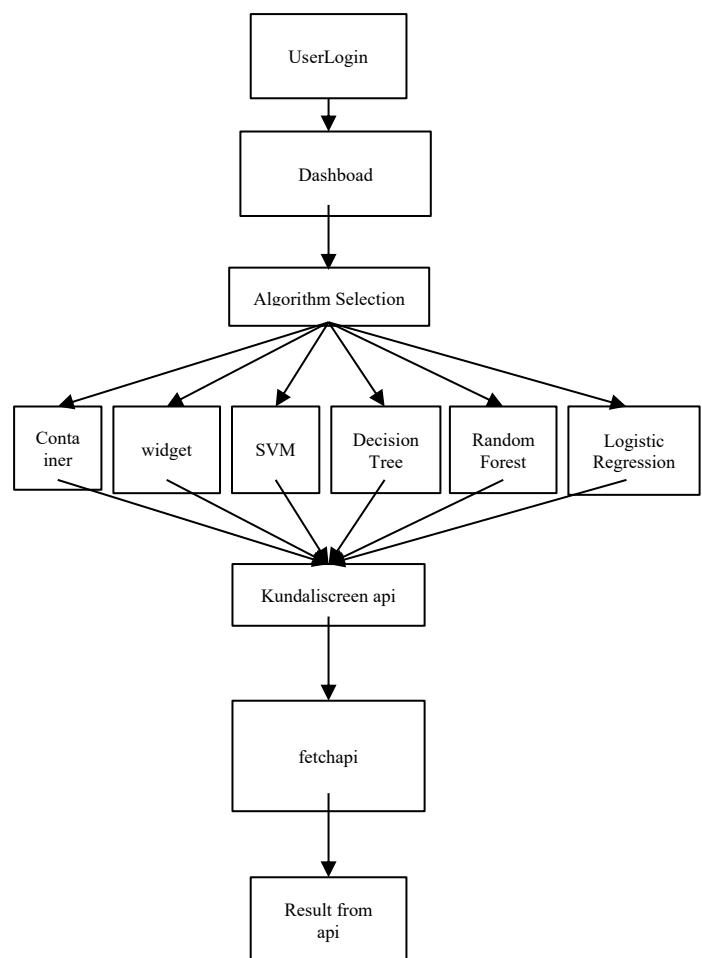
**Keywords-** cardiac disease detection, datasets, heart disease prediction, Machine Learning, Random Forest algorithm.

## I. INTRODUCTION

**The AstroYaari Application** is an integrated astrology service platform designed to streamline and enrich the user experience in seeking astrological guidance. It offers a wide range of features including real-time astrologer consultations, personalized horoscope generation, Kundli analysis, and secure chat-based communication. The system is equipped with intelligent matchmaking, daily/weekly forecasts, and an organized user

## II. PROPOSED MODEL

### III.

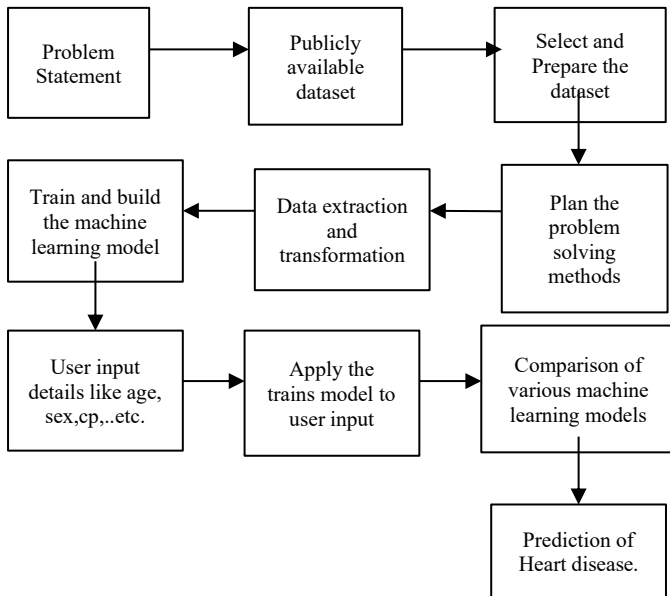


**Figure 1: Proposed work**

Figure 1 shows the proposed model. Where the first step is Data Extraction, Collecting the dataset for analysis and comparison from multiple sources, the second step is Data Transformation.

Data Transformation is a process of removing all the outliers, missing values, converting and structuring into usable format. The third step is Algorithm Selection where different algorithms are selected and used in model building. In the fourth step models are trained from the past data. In the next step, performance is analyzed and the accuracy of the algorithms is compared and find the best algorithm based on accuracy. At last, it will predict whether a person has heart disease or not based on the given input.

#### IV. METHODOLOGY



**Figure 2: Design and Approach**

It is a data model for describing the data or information aspects of a business domain in its process requirements in an abstract way that lends itself to ultimately (things) and the relationships that can exist among them, and the databases. An being implemented in database such as relational database. The main components of ER models are entities entity is a thing that exists either physically or logically. An entity may be physical object such a house, a car, an event as a house sale or a car service, or a concept such as former transaction or order (they exist logically). Although the term entity is the most common used, following then we should really distinguish between an entity and an entity type. An entity type is a category. An entity, strictly speaking is an instance of a given entity type. There are usually many instances of an entity type. Because the term entity type is somewhat cumbersome, most people tend to use the term entity as a synonym for this term

#### V. CONCLUSION:

- Providing a secure and user-friendly platform for astrology consultations.

- Offering flexible authentication options using both Firebase Phone OTP and OTPless (WhatsApp/Gmail).
- Enabling real-time chat functionality between users and astrologers with a scalable backend powered by Firebase.
- Ensuring a smooth and intuitive user experience through an organized interface developed with Flutter and managed via GetX architecture.

enhance the capabilities and user engagement of the Astroyaari app, the following improvements and features are recommended for future development:

1. **Voice and Video Consultation:**
  - Integrate WebRTC or similar technologies to enable voice/video chat for premium consultations.
2. **Astrologer Availability & Scheduling:**
  - Add live availability indicators and appointment booking system for astrologers.
3. **AI-Generated Daily Predictions:**
  - Incorporate machine learning or language models to generate personalized horoscopes or daily forecasts.
4. **Wallet and Payment Integration:**

#### FUTURE SCOPE

##### Astrologer Chat System:

- Implemented real-time chat functionality between users and astrologers using Firebase Firestore.
- Supports multimedia messages (text, images, optional attachments).